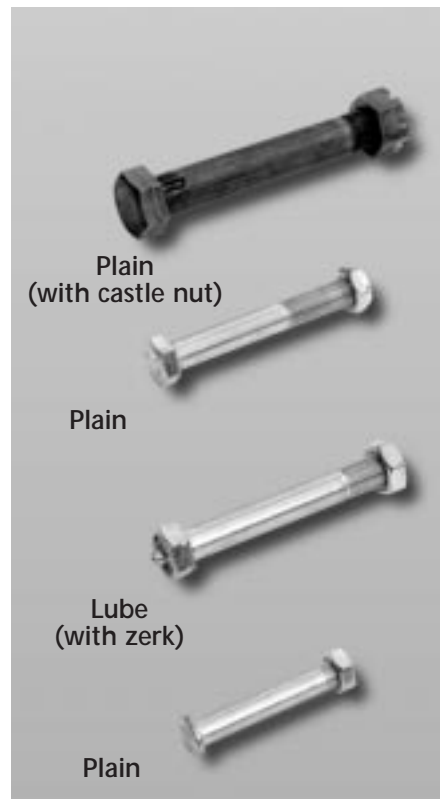


# COMPONENT PARTS FOR CASTERS / WHEELS

## AXLES WITH NUT

Type	Diameter x Length Inches	Used In Series	Part Number
Plain	$\frac{5}{16} \times 1 \frac{7}{8}$	01/02 (2 $\frac{1}{2}$ " ), 03/04 (2 $\frac{1}{2}$ " )	AB-053009
Plain	$\frac{3}{8} \times 2 \frac{1}{4}$	01/02 (3" ), 03/04	AB-063609
Lube (Hollow)	$\frac{3}{8} \times 2 \frac{1}{4}$	01/02 (3" ), 03/04, 05/06	AZ-063408
Lube (w/ Zerk)	$\frac{3}{8} \times 2 \frac{1}{4}$	01/02 (3" ), 03/04	AZ-063408-ZK
Plain	$\frac{3}{8} \times 2 \frac{3}{8}$	01 Brake (3" ), 03 Brake	AB-063809
Lube (Hollow)	$\frac{3}{8} \times 2 \frac{3}{8}$	01 Brake (3" ), 03 Brake	AZ-063808
Lube (w/ Zerk)	$\frac{3}{8} \times 2 \frac{3}{8}$	01 Brake (3" ), 03 Brake, 05/06 Brake	AZ-063808-ZK
Plain	$\frac{7}{16} \times 2 \frac{3}{4}$	01/02 (4" )	AB-074409
Lube (Hollow)	$\frac{7}{16} \times 2 \frac{3}{4}$	01/02 (4" )	AZ-074308
Plain	$\frac{7}{16} \times 2 \frac{13}{16}$	01/02 Brake (4" )	AB-074509
Lube (w/ Zerk)	$\frac{1}{2} \times 2 \frac{13}{16}$	1 Med. Duty	AZ-084508
Plain	$\frac{1}{2} \times 3 \frac{3}{8}$	1 Med. H.D., 3 (2" wide)	AB-085209
Lube (w/ Zerk)	$\frac{1}{2} \times 3 \frac{3}{8}$	1 Med. H.D. 3, 5 & 6 (2" wide), KP1	AZ-085408
Lube (w/ Zerk)	$\frac{1}{2} \times 4$	3 (2 $\frac{1}{2}$ " wide), 6 (2 $\frac{1}{2}$ " wide)	AZ-086408
Lube (w/ Zerk)	$\frac{3}{4} \times 4 \frac{1}{4}$	4	AZ-126808
Lube (w/ Zerk)	$\frac{3}{4} \times 4 \frac{3}{4}$	7, 8, 9, KP7, KP8	AZ-127608
Lube (w/ Zerk & Castle Nut)	$\frac{3}{4} \times 4 \frac{1}{4}$	10 (2 $\frac{1}{2}$ " wide)	AZ-126808C
Plain (w/ Castle Nut)	$\frac{3}{4} \times 4 \frac{3}{4}$	10, 11 (3" wide)	AB-127609
Plain (w/ Castle Nut)	$\frac{3}{4} \times 6$	11 (4" wide)	AB-129609
Plain	1 x 5	KP11 (3" wide)	AB-16809
Plain	1 x 6	KP11 (4" wide)	AB-169609
Plain	1 x 7	KP11 (5" wide)	AB-1611209
Plain	1 $\frac{1}{4}$ x 5 $\frac{1}{4}$	KP12, 12 (3" wide)	AB-208409
Plain	1 $\frac{1}{4}$ x 6 $\frac{1}{2}$	KP12, 12 (4" wide)	AB-2010409

For other sizes, consult factory.



# COMPONENT PARTS FOR CASTERS/WHEELS

## WASHERS

Retaining Washer	Type	I.D. x O.D. Inches	Thrust Washer	I.D. x O.D. Inches
RW-081703	1	1/2 x 1 1/16	TW-082400	1/2 x 1 1/2
RW-101990	3	5/8 x 1 3/16	TW-102600	5/8 x 1 5/8
CW-121905	2	3/4 x 1 3/16	Not Required	—
RW-121903	1	3/4 x 1 3/16	TW-122600	3/4 x 1 5/8
RW-121990	3	3/4 x 1 3/16	TW-122600	3/4 x 1 5/8
RW-162903	1	1 x 1 13/16	TW-162903	1 x 2 7/16
RW-163103	1	1 x 1 15/16	TW-163900	1 x 2 7/16
RW-163190	3	1 x 1 15/16	TW-163900	1 x 2 7/16
RW-203103	1	1 1/4 x 1 15/16	TW-203900	1 1/4 x 2 7/16
RW-203190	3	1 1/4 x 1 15/16	TW-203900	1 1/4 x 2 7/16
RW-203903	1	1 1/4 x 2 7/16	TW-204800	1 1/4 x 3
RW-203990	3	1 1/4 x 2 7/16	TW-204800	1 1/4 x 3
RW-243903	1	1 1/2 x 2 7/16	TW-245600	1 1/2 x 3 1/2
RW-243990	3	1 1/2 x 2 7/16	TW-245600	1 1/2 x 3 1/2



**TYPE 1**  
Metal Retaining Washer



**TYPE 2**  
Nylon Combination Retaining & Thrust Washer (Sealed)



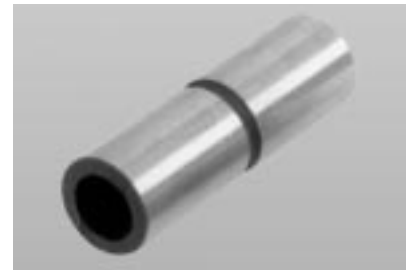
**TYPE 3**  
Metal Retaining Washer With Neoprene Lip (Sealed)



**THRUST WASHER**  
Flat, Zinc Plated

## SPANNER BUSHINGS

Type	I.D. x O.D. x Length Inches	Lube Hole	Part Number
Steel	5/16 x 3/8 x 1 5/8	N	SB-050626
Steel	3/8 x 1/2 x 1 5/8	N	SB-060826
Steel	3/8 x 1/2 x 1 5/8	Y	SB-060826H
Delrin	3/8 x 1/2 x 1 5/8	N	SD-060826
Steel	3/8 x 3/4 x 1 7/8	Y	SB-061230
Steel	7/16 x 5/8 x 1 7/8	Y	SB-071030
Steel	7/16 x 5/8 x 2	Y	SB-071032
Delrin	1/2 x 3/4 x 1 7/8	N	SD-081230
Delrin	1/2 x 3/4 x 2 7/16	N	SD-081239
Delrin	1/2 x 3/4 x 2 7/16	Y	SD-081239H
Steel	1/2 x 3/4 x 1 7/8	Y	SB-081230
Steel	1/2 x 3/4 x 2 7/16	Y	SB-081239
Steel	1/2 x 3/4 x 3	Y	SB-081248
Steel	5/8 x 3/4 x 1 7/8	Y	SB-101230
Steel	5/8 x 3/4 x 2 7/16	Y	SB-101239
Steel	3/4 x 1 x 3	Y	SB-121648
Steel	3/4 x 1 x 3 1/2	Y	SB-121656
Steel	3/4 x 1 x 4	Y	SB-121664
Steel	1 x 1 1/4 x 3 9/16	N	SB-162057
Steel	1 x 1 1/4 x 4 9/16	N	SB-162073
Steel	1 1/4 x 1 1/2 x 3 9/16	N	SB-202457
Steel	1 1/4 x 1 1/2 x 4 9/16	N	SB-202473



**Steel**  
(with lube hole)  
For use with roller bearing wheels



**Delrin**  
For use with Delrin bearing wheels

Note: For lubrication thru hollow axle, spanner bushing required with lube hole. Many sizes not shown are available, please inquire.

# COMPONENT PARTS FOR CASTERS/WHEELS

## DELTRIN® BEARINGS

Type	I.D. x O.D. x Length Inches	Part Number
Flanged	$\frac{3}{8} \times 1 \frac{1}{8} \times \frac{1}{2}$	DB-061800
	$\frac{1}{2} \times 1 \frac{1}{8} \times \frac{1}{2}$	DB-081800
	$\frac{1}{2} \times 1 \frac{3}{16} \times 1 \frac{11}{16}$	DB-081900
	$\frac{5}{8} \times 1 \frac{3}{16} \times 1 \frac{11}{16}$	DB-101900
	$\frac{3}{4} \times 1 \frac{3}{16} \times 1 \frac{11}{16}$	DB-121900
Straight	$\frac{1}{2} \times 1 \frac{3}{16} \times 1 \frac{5}{8}$	DB-081930
	$\frac{5}{8} \times 1 \frac{3}{16} \times 1 \frac{5}{8}$	DB-101930
	$\frac{3}{4} \times 1 \frac{3}{16} \times 1 \frac{5}{8}$	DB-121930
	$\frac{1}{2} \times 1 \frac{3}{16} \times 2 \frac{1}{8}$	DB-081935
	$\frac{5}{8} \times 1 \frac{3}{16} \times 2 \frac{1}{8}$	DB-101935
	$\frac{3}{4} \times 1 \frac{3}{16} \times 2 \frac{1}{8}$	DB-121935
	$1 \times 1 \frac{15}{16} \times 1 \frac{1}{4}$	DB-163120
	$1 \frac{1}{4} \times 1 \frac{15}{16} \times 1 \frac{1}{4}$	DB-203120



Flanged  
Delrin® Bearing



Straight  
Delrin® Bearing

## ROLLER BEARINGS

Type	I.D. x O.D. x Length Inches	For Hub Lengths	Part Number
Split Race	$\frac{1}{2} \times 1 \frac{1}{16} \times 1 \frac{1}{8}$	$1 \frac{9}{16}$	RB-081718
Split Race	$\frac{3}{4} \times 1 \frac{3}{16} \times 1 \frac{3}{8}$	$1 \frac{5}{8}$	RB-121922
Split Race	$\frac{3}{4} \times 1 \frac{3}{16} \times 1 \frac{7}{8}$	$2 \frac{3}{16}, 2 \frac{1}{4}$	RB-121930
*Encased	$\frac{3}{4} \times 1 \frac{3}{16} \times 2$	$2 \frac{3}{16}, 2 \frac{1}{4}$	TB-121932
Split Race	$\frac{3}{4} \times 1 \frac{3}{16} \times 2 \frac{1}{2}$	$2 \frac{1}{2}$	RB-121940
Split Race	$1 \times 1 \frac{13}{16} \times 2 \frac{1}{2}$	$2 \frac{1}{2}$	RB-162940
Split Race	$1 \times 1 \frac{15}{16} \times 2 \frac{1}{2}$	$2 \frac{1}{2}$	RB-163140
Split Race	$1 \times 1 \frac{15}{16} \times 3$	$3 \frac{1}{4}$	RB-163148
Split Race	$1 \frac{1}{4} \times 1 \frac{15}{16} \times 2 \frac{1}{2}$	$2 \frac{1}{2}$	RB-203140
Split Race	$1 \frac{1}{4} \times 1 \frac{15}{16} \times 3$	$3 \frac{1}{4}$	RB-203148
Split Race	$1 \frac{1}{4} \times 2 \frac{7}{16} \times 3$	$3 \frac{1}{4}$	RB-203948
Split Race	$1 \frac{1}{4} \times 2 \frac{7}{16} \times 4$	$4 \frac{1}{4}$	RB-203964
Split Race	$1 \frac{1}{4} \times 2 \frac{7}{16} \times 5$	$5 \frac{1}{4}$	RB-203980
Split Race	$1 \frac{1}{2} \times 2 \frac{7}{16} \times 4$	$4 \frac{1}{4}$	RB-243964
Split Race	$1 \frac{1}{2} \times 2 \frac{7}{16} \times 5$	$5 \frac{1}{4}$	RB-243980



Split Race

Encased

Note: Outside diameters shown include outer raceway.  
\* Used in 2" wide Solid Urethane and Polyolefin Wheels.

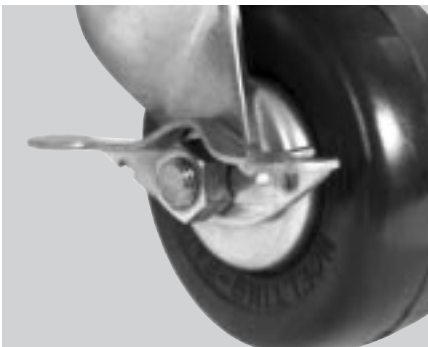
# BRAKE OPTIONS

## Cam Style 1



**Side Lever.** Designed to bind, or “Cam” the hub of wheel. Can be mounted left or right. Unique in that it can be mounted to rigid casters as well.

## Cam Style 2



Simple in design, these brakes utilize a swivel yoke which has been factory modified to accept a brake. Non brake casters cannot be retro-fitted.

## Tread Contact



**Side Lever.** The brake lever forces a shoe to move down, into and across wheel tread. Can be mounted left or right.

## 4 Position Swivel Lock



Designed to lock the direction of travel on swivel casters effectively making them function as a rigid caster. Some series are pre-notched allowing for field installation.

## Thumb Screw



Simply a threaded “T-Handle”. Very secure brake which can be mounted on swivel or rigid, left or right. Not foot accessible, may not be suitable if equipment is to be moved often.

## Top Locking



Lever sits above wheel making it accessible from either side. Mounted on the trailing side of the swivel, lever faces operator as cart is moved away.

## Face Contact



Typically standard on heavy to extra heavy duty casters. Several variations are available, however all make face contact along trailing side of caster.

## Floor Lock



Sometimes used in lieu of caster brakes, floor locks hold equipment in place by extending a rubber pad securely to floor. Swivel brake casters will “pivot” even with brake engaged where as floor locks hold firmly. May not be suited where ground clearance is a concern. For more information refer to page 70.

Caster Series	Brake Option(s)	Available for Wheel Sizes	Field Installable
01 General Duty	Cam Style 2	All Sizes	No
SPL, TL, G2, XL Light Duty	Tread Contact	3", 4", 5" (Note: 2" & 2 1/2" Cam Style only not field installable)	Yes
03, TM, G03, XM Light Medium Duty	Tread Contact	All	Yes
	Top Locking		
05 Light Med Duty Deluxe	Tread Contact	3", 3 1/2", 4", 5"	Yes
1 Medium Duty	Cam Style 1	3 1/4", 4", 5", 6" (Rigid also)	Yes
1 Medium Heavy Duty	Tread Contact	4", 5", 6", 8"	Yes
	Top Locking		
	Cam Style 1	All Sizes (Rigid also)	
3 Heavy Duty (cold forged)	Cam Style 1	All Sizes (Rigid also)	Yes
4 Heavy Duty (cold forged)	Thumb Screw	All Sizes (Rigid also)	No
5 Heavy Duty (hot forged)	Cam Style 1	All Sizes (Rigid also)	Yes
6 Heavy Duty (hot forged)	Cam Style 1	All Sizes (Rigid also)	Yes
7 Economy Heavy Duty	Thumb Screw	All Sizes (Rigid also)	No
8 Heavy Duty	Thumb Screw	All Sizes (Rigid also)	No
9 Trailer Duty	Face Contact	All Sizes	No
10 Heavy Duty	Face Contact	All Sizes	No
11 Heavy Duty	Face Contact	All Sizes	No
12 Extra Heavy Duty	Face Contact	All Sizes	No
DW Dual Wheel	Face Contact	All Sizes	No
KP13 King Pin-Free	Cam Style 1	All Sizes (Rigid also)	Yes
KP7 King Pin-Free	Face Contact	All Sizes	Yes
KP8 King Pin-Free	Face Contact	All Sizes	Yes
KP11 King Pin-Free	Face Contact	All Sizes	Yes
KP12 King Pin-Free	Face Contact	All Sizes	Yes
KP13 King Pin-Free Dual Wheel	Face Contact	All Sizes	No

For other series, refer to series page.

Note: Caster brakes aid in maintaining cart or fixture from moving on uneven floor surfaces.

They are not intended nor designed for slowing moving equipment, or holding ramped equipment.