

SERIES CL LIGHT MED DUTY COMPLETE LOCK

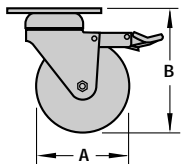
Capacities to 300 lbs.

Standard Features

- **Complete Locking Mechanism** - Locks both the wheel and the swivel
- **Load Bearings** - Two full independent rows of ball bearings
- **Wheel Bearings** - Are totally sealed
- **Dust Shields** - Upper and lower race

Optional Features

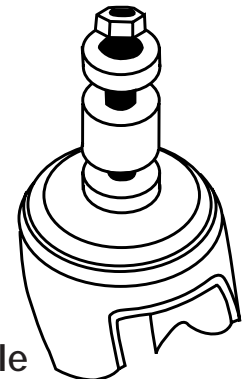
- **Expandable Socket Adapters**
- **Hollow King Pin (Swivel Only)** - Allows for special length bolt to be inserted through open hole in swivel assembly.
- **Swivel without Lock (Prefix CLS)**



CL-PPB-4



CLR-PPB-4



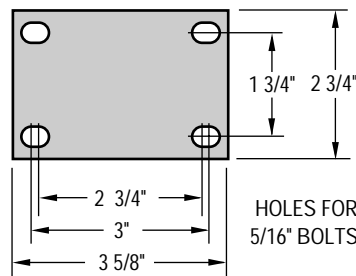
Expandable Stem Selections

Inside Diameter of Tubing	Stem Suffix
3/4" - 15/16" Round or Square	-100
1" - 1 3/16" Round or Square	-125
1 1/4" - 1 1/2" Round or Square	-150
1 9/16" - 1 3/4" Round or Square	-175

Add Expansion Stem Suffix to the swivel part number.

Example CL-SRP-35-100

Standard Top Plate



Wheel Specifications						Caster Specifications					Part Number	
Dia. "A" Inches (mm)	Tread Inches (mm)	Wheel Composition	Ref. to Page	Bearing Type	Axle Dia. Inches (mm)	Load Capacity lbs. (KGS)	Overall Height "B" Inches (mm)	Swivel Radius Inches (mm)	Attach. Bolt Inches (mm)	Approx. Shipping Weight lbs. (KGS)	Swivel Complete Lock	Rigid
3 1/2 (89)	1 3/8 (35)	Soft Rubber	73	Self Lube	3/8 (10)	200 (90)	4 29/32 (124)	2 21/32 (74)	5/16 (8)	1.9 (.9)	CL-SRP-35	CLR-SRP-35
		Santoprene (Polyolefin Core)	72	Ball		200 (90)				1.8 (.8)	CL-SPB-35	CLR-SPB-35
		Polyurethane (Polyolefin Core)	72	Delrin		200 (90)				1.8 (.8)	CL-SPD-35	CLR-SPD-35
		Polyurethane (Polyolefin Core)	80	Ball		250 (112)				1.8 (.8)	CL-PPB-35	CLR-PPB-35
		Polyurethane (Polyolefin Core)	80	Delrin		250 (112)				1.8 (.8)	CL-PPD-35	CLR-PPD-35
4 (102)	1 3/8 (35)	Soft Rubber	73	Self Lube	3/8 (10)	200 (90)	5 9/16 (141)	3 7/32 (82)	5/16 (8)	2.2 (1.0)	CL-SRP-4	CLR-SRP-4
		Santoprene (Polyolefin Core)	72	Ball		200 (90)				2.1 (.9)	CL-SPB-4	CLR-SPB-4
		Polyurethane (Polyolefin Core)	72	Delrin		200 (90)				2.1 (.9)	CL-SPD-4	CLR-SPD-4
		Polyurethane (Polyolefin Core)	80	Ball		250 (112)				2.1 (.9)	CL-PPB-4	CLR-PPB-4
		Polyurethane (Polyolefin Core)	80	Delrin		250 (112)				2.1 (.9)	CL-PPD-4	CLR-PPD-4
	Solid Urethane	77	Plain	275 (124)	2.1 (.9)	CL-KTP-4	CLR-KTP-4					
5 (125)	1 3/8 (35)	Soft Rubber	73	Self Lube	3/8 (10)	200 (90)	6 1/2 (165)	3 23/32 (95)	5/16 (8)	2.9 (1.3)	CL-SRP-5	CLR-SRP-5
		Santoprene (Polyolefin Core)	72	Ball		225 (101)				2.9 (1.3)	CL-SPB-5	CLR-SPB-5
		Polyurethane (Polyolefin Core)	72	Delrin		225 (101)				2.9 (1.3)	CL-SPD-5	CLR-SPD-5
		Polyurethane (Polyolefin Core)	80	Ball		275 (124)				2.9 (1.3)	CL-PPB-5	CLR-PPB-5
		Polyurethane (Polyolefin Core)	80	Delrin		275 (124)				2.9 (1.3)	CL-PPD-5	CLR-PPD-5
	Solid Urethane	77	Plain	300 (135)	2.9 (1.3)	CL-KTP-5	CLR-KTP-5					