



# MAGNUS

*Moved By Innovation™*



The **Jilson** Group



**CASTER-PRO®**



CASTERS | GAS SPRINGS | LEVELERS | BEARINGS | CLIPS & TIES | SHEARS | COUPLERS | ACCESSORIES | SOLUTIONS

# Who Is Magnus?

The Magnus network of companies provides specialized and standard motion control solutions including casters, wheels, levelers, gas springs, bearings, clips and ties, shears, couplers and accessories. Magnus serves **design engineers** seeking motion control solutions that meet exacting performance, budget and deadline goals, and **purchasing professionals** looking for price-competitive motion control components. Magnus provides motion control solutions with a level of formalized quality unrivaled in the industry; an innovative approach that enables us to offer superior, resourceful solutions; and personal, relationship-based service.



## Formalized Quality

Magnus is **ISO 9001:2000** certified, providing customers with the highest standardized levels of process and product quality, staff expertise, and business integrity.



## Innovation

Magnus leverages long-standing partnerships, supply chain information systems, and engineering expertise to craft comprehensive motion control solutions that offer the best combination of performance and price.



## Service

Magnus fosters relationships based on unparalleled support provided in a timely, friendly and courteous manner.

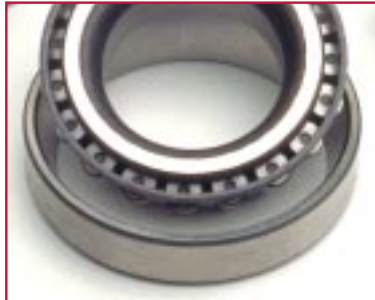
## When design and quality matter.

Over the past decade, mass manufacturing and price competition have relegated the perception of many products to that of a commodity item, differentiable only by price. At the same time, the need for more capable motion control devices has continued to grow. Across industries such as business machines, food service, healthcare and retail point of purchase merchandisers, motion control solutions must not only be affordable, they must also meet and exceed increasingly rigorous performance requirements. Design engineers and purchasing professionals alike are confronted with the challenge of finding solutions that perform to spec, and with the lowest total cost of acquisition and ownership. In a marketplace inundated with hundreds of manufacturers, suppliers and distributors, finding a proven, experienced partner can be daunting.

The need for a single source solution provider that can meet the evolving and diverse needs of these industries is clear. The Magnus network of companies offers a peerless level of experience, design savvy and a pervasive dedication to quality. This enables us to deliver solutions of incomparable integrity, performance and value. When design and quality matter, Magnus should be your first and only call.

# Formalized Quality

Many companies profess a dedication to quality, but few pursue it as obsessively as Magnus. Our commitment is to offering products that are reliable, durable and deliver superior total cost of ownership. Magnus' ISO 9001:2000 certification is verifiable proof that quality pervades the organization from top to bottom.



## What does ISO 9001:2000 mean to you?

The ISO 9001:2000 standard is designed to evaluate each process affecting quality, beginning with initial contracts received from customers to packaging and delivery of finished products. The intent of this standard is to provide a universal baseline for quality management which can be used by companies around the world.

The main focus of ISO 9001:2000 is customer satisfaction. The elements in the standard ensure that the company:

1. Standardizes, organizes, and controls operations
2. Provides for consistent dissemination of information
3. Improves various aspects of the business based on statistical data and analysis
4. Enhances customer responsiveness to products and service
5. Encourages process improvement

The result is that a certified company such as Magnus Mobility Systems, Inc., has met a predefined set of quality standards, and therefore can provide a higher level of customer satisfaction to their customers.

*Magnus Mobility Systems, Inc. is audited annually by one of the most demanding international auditing firms, Det Norske Veritas. The audit ensures that our company has successfully undergone a comprehensive, rigorous assessment of our processes and our organization meets defined standards of quality. It also certifies that our systems have been adequately defined and corrective action systems are fully developed and functional, which reduces the need for costly conformance inspections.*

*Magnus Mobility Systems, Inc., through our registrar, Det Norske Veritas, is certified to ISO 9001:2000 (Certificate CERT-8355-2003-AQ-HOU-RAB).*

# Innovation

From its beginnings in 1978, Magnus has always pursued a better way. From its early days spent concentrating on casters and wheels, Magnus has diversified its product offering to include a wide range of components. This broad product line has enabled us to evolve to a comprehensive, single-source solution provider. Whenever motion control is concerned, Magnus has a solution to offer.

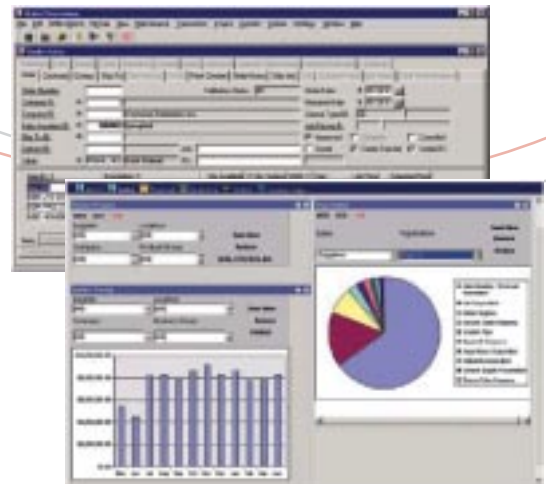
## Greater resources means increased resourcefulness.

The Magnus network of companies is a collaborative infrastructure that produces results greater than the sum of its parts. Drawing upon a cumulative knowledge base and experience level that far exceeds that of any other company in the industry, our solutions are built better from the ground up. With professionals well-versed in the intricacies of virtually every application, every vertical industry, we are able to craft solutions with a unique eye for detail and a keen focus on protecting your investment.

Solid strategic partnerships enable Magnus to compile solutions from component providers inside and outside of our network. The most durable wheel, the most resistant bearing, the right-priced leveler — whatever the need — Magnus can craft a solution that other companies just can't replicate.

## Strategic supply chain management offers you the world.

The challenges of competing in a global marketplace can often be overwhelming. With Magnus on your side, you can utilize our proven supply chain management practices to: 1) develop and execute world-class strategic sourcing programs; 2) identify and manage low-cost, high-quality sources in the emerging regions of the world (in particular China, India and Eastern Europe); 3) improve overall business processes. Magnus can actively craft strategies to ensure you are procuring in the most efficient and rewarding way.



## Putting technology to work for you.

Information is the lifeblood of any organization. Better access to information facilitates more informed decisions and greater responsiveness. Magnus' Customer Relationship Management software affords our customers visibility into order status and inventory availability, enabling simplified purchasing and communication. This robust intelligence tool delivers real-time information and an ever-present link to Magnus and your account.

*Magnus' commitment to innovation is manifested in the deployment of our new Customer Management tool. Always at the forefront of customer service, Magnus uses this online tool to enable you to track orders, place new ones, and find a wealth of logistical intelligence.*

*Once you find the product information you require on our Web site, log in to the Online Ordering tool and place your order. It's available day or night, at your convenience.*

# Service



Magnus has reached the top of its game by providing superior solutions based on sound design and engineering expertise, and through its steadfast commitment to customer satisfaction. From every phone call answered to each package shipped, customer service pervades the organization. Partnerships are grounded in trust, and are nourished by commitment. Every day is another opportunity to prove that dedication to you.

## The performance you count on, the courtesy you deserve.

At Magnus, your deadlines are our deadlines. Your budgets are our budgets. Our track record of timeliness and constant process improvements reflect our unwavering focus on inventory management, shipping timeliness, and order accuracy.

While the consistent, reliable nature of our performance may evoke images of an ultra-precise machine, the friendly voice you'll hear on the other end of your phone will remind you that you're dealing with some of the most personable staff in the industry.

Our staff includes engineers and technical sales representatives who are the most informed, helpful professionals you'll encounter. Always available for insightful advice, they will help you make reasoned purchase decisions or simply give you guidance even if you're not ready to buy. Customer support representatives put your satisfaction first and are happy to assist you with any requests you may have. You'll quickly understand why Magnus customers are customers for the long term.



# Casters and Accessories

Available from:  
Magnus Motion Control Solutions  
The Jilson Group  
Caster-Pro  
Magnus Caster-Pro Ltd.



## Casters make the world go round.

If there's a device that needs to move, chances are The Magnus Companies can spec a caster solution to satisfy the need. If your primary concern is weight capacity, resistance to extreme conditions, durability, aesthetics, or a combination of any of these, Magnus offers a huge selection of existing models to meet that need. Or we can draw upon our unrivaled design experience to customize a solution specific to your needs and application.



## Magnus casters are at work in every industry.

Business machines, medical and laboratory devices, food service apparatus, heavy duty and shop equipment casters — Magnus has been developing motion control solutions for these industries for more than 25 years. Every solution is backed by our hallmark quality, reliability and application-specific performance.



# Casters and Accessories

Available from:  
Magnus Motion Control Solutions  
The Jilson Group  
Caster-Pro  
Magnus Caster-Pro Ltd.

## The best combination of form and function.



The Magnus network of companies offers caster and wheel solutions designed to meet the most exacting performance requirements. They also do it in style. For applications that require specific aesthetics, Magnus offers a wide range of colors and finishes to make sure your products look their best. European-styled casters can add that unique flair to set your product design apart.



## Accessories round out your caster solution.

We could hardly claim to be a turnkey solution provider if we forgot the details. Magnus provides all varieties of parts and options to complete your solution, including brackets, sockets, axles, spanners and washers. We offer our unique Kwik Klips® which enable you to remove or change casters fast. Swivel locks, floor truck locks, brakes, grease seals, thread guards, bumpers...we supply them all. Don't know what you need? Don't worry, we'll help pick the accessories you need to keep your solution moving.



# Gas Springs

Available from:  
Magnus Motion Control Solutions

Gas springs are the cost-effective answer to positioning moving parts. Gas springs improve the performance and ergonomic character of a device, while enhancing safety through controlled opening and closing speeds. Designed to last the lifetime of most products, gas springs are self-contained, clean and maintenance-free. Put them to work in a variety of environments and applications, including food processing equipment, automotive, medical and diagnostic apparatus, fitness equipment and business machinery.



# Levelers

Available from:  
Magnus Motion Control Solutions  
Magnus Caster-Pro Ltd.  
The Jilson Group



Levelers are the proven solution to level the playing field for devices large and small. From peripherals and test devices, to mainframes and large industrial equipment, there is a solution for every weight and size requirement.

Levelers are comprised of bases and stems. Both are available in nylon, steel and stainless models. Depending on an environment's particular characteristics, non-skid and anti-vibration options can be applied. A broad range of base diameters put all equipment on solid footing. Nearly any stem size is available for superior height control.



# Bearings

Available from:  
The Jilson Group  
Magnus Motion Control Solutions

The Magnus Companies offer the highest quality bearings and housings, either from our extensive in-stock inventory or from our ability to custom fabricate to exact specifications — in quantities from one to millions. With literally thousands of standard and non-standard parts available — in both imperial and metric sizes — you'll enjoy quicker delivery and less downtime for your equipment.



## Not all bearings are created equal.



It takes tough bearings to withstand a wet, corrosive environment. Our non-metallic bearings are lightweight and will go where no conventional bearing can. Engineered using materials specially matched to your application, our bearings keep your equipment running at optimal performance.

When combined with stainless steel or non-metallic balls made of polymer, ceramic or glass, they are completely non-magnetic — an ingenious alternative for applications in which magnetic distortion must be avoided.



Our plastic ball bearings require no lubrication. They are self-lubricating when dry, and when submersed in liquids, they are lubricated by that medium. Whether if you need a solution for

those hard-to-reach areas that are inaccessible for lubrication, or for applications that demand low contamination, such as food processing, these bearings are a great solution.

## Clips & Ties

Available from:  
The Jilson Group

Fast to close, easy to release, QuickKlips® from the Jilson Group are perfect for production, laboratory and food applications where bags are frequently opened and closed. Sizes ranging from 4 inches to 16 inches long can be custom imprinted and color matched to your needs.



For greater strength and resiliency, arrow ties are ideal for everything from tying small bags to bundling heavy wires and cables. They also provide excellent resistance to weathering, making them suitable for outdoor applications.

## Shears

Available from:  
The Jilson Group

QuikSnip heavy duty, industrial quality shears cut sheet metal and other materials cleanly and accurately. They do it without distorting or curling the edges of the cut, and without damaging painted, plated, anodized or polished surfaces.

QuikSnip's unique design permits high mechanical forces to be transmitted to the cutting jaw, greatly reducing cutting effort. Straight or curved cuts can be made with ease. And interior cuts can be made by first drilling a 1/4" hole to accommodate the cutting blade. Choose from four models to match your job.



## Couplers

Available from:  
The Jilson Group



The Jilson Group offers a full line of patented, premier-quality quick release couplers. Distinctive among this product group is the Bi-Tec Series of self-venting couplers. The combination of a sliding valve and quick lock mechanism makes the handling and safety function of the Bi-Tec Series unique. Couplers are available in industry standard sizes and can be manufactured out of brass, steel, aluminum and stainless steel, with various plating and sealing options.

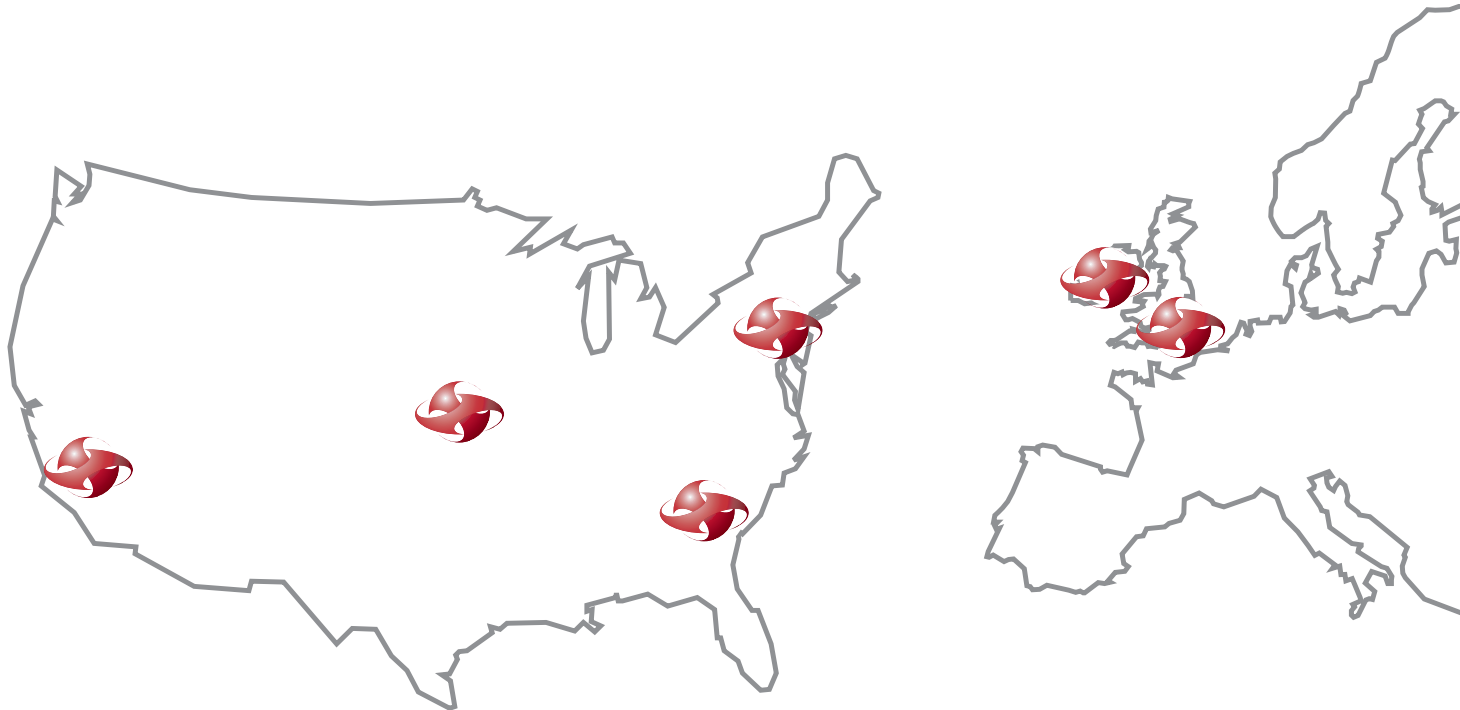
# Magnus Network of Companies

Magnus combines the best of single-source convenience with the benefits of a global network. Through deliberate growth and geographic diversification, Magnus offers international reach to customers from the Pacific Rim to Europe. Strategic distribution and service centers enable Magnus to provide timely delivery of the products you need, and the regional customer service upon which you rely.

## There's strength in numbers.

With our affiliate companies, Magnus is able to offer the broadest range of products possible. Regardless of budget or performance requirements, a company in our network is ideally suited to fulfill the need. Or, for more customized requests, we can draw upon the experience of our entire network to compile unique solutions unavailable from any other single source.

More than 25 years in business have made Magnus one of the more "connected" companies in the industry worldwide. We have forged strong strategic partnerships with the industry's leading manufacturers, affording us a selection of the most appropriate components for any solution, and ensuring your requests are always met in a timely and efficient manner.





1912 West Business Center Drive | Orange, CA 92867-7906 USA  
Phone: 1.800.858.7801 | 1.714.771.2630 | Fax: 1.714.288.7471  
[www.magnushq.com](http://www.magnushq.com)

MAGNUS AFFILIATE COMPANIES



[www.magnusinc.com](http://www.magnusinc.com)  
1.800.858.7801  
1.714.771.2630

LOS ANGELES | CHARLOTTE



[www.jilson.com](http://www.jilson.com)  
1.800.969.5400  
1.973.471.2400

NEW YORK



[www.magnusinc.com](http://www.magnusinc.com)  
1.800.858.7801  
1.714.771.2630

LOS ANGELES | CHARLOTTE



[www.casterpro.com](http://www.casterpro.com)  
1.800.858.7801  
1.714.771.2630

NATIONWIDE



[www.magnusinc.com](http://www.magnusinc.com)  
+44(0)1525 630425

LONDON | DUBLIN